



**MAV 5,5 - 7,5 - 10 - 15 - 20 (G2)**  
**MAV 10 - 15 - 20 V (G2)**

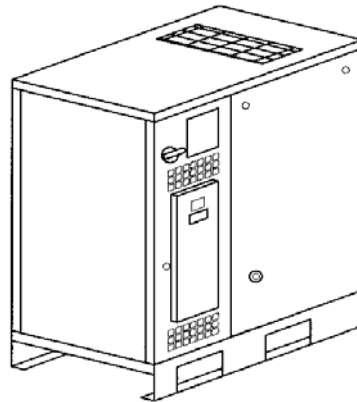
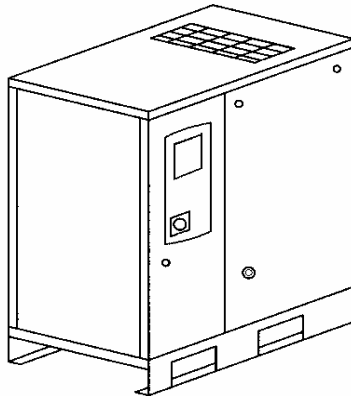
CATALOGO RICAMBI  
SPARES LIST  
CATALOGUE PIECES DETACHEES  
ERSATZTEILKATALOG  
CATÁLOGO DE PIEZAS DE RECAMBIO

Codice / Code / Code / Kode / Código
<b>2200791300 / 00</b>
Edizione / Edition / Edition / Ausgabe / Edición
<b>01/01/2009</b>

*Con kit di manutenzione  
With service kit  
Avec kit a maintenance  
Mit Wartungsaufbausatz  
Con kit de mantenimiento*

**HP 5,5 - 7,5 - 10 - 15 - 20**  
**kW 4 - 5,5 - 7,5 - 11 - 15**

COMPRESSORI INDUSTRIALI  
INDUSTRIAL COMPRESSORS  
COMPRESSEURS INDUSTRIELS  
INDUSTRIELLE KOMPRESSOREN  
COMPRESOR INDUSTRIAL



**HP 5,5 - 7,5 - 10 - 15 - 20  
kW 4 - 5,5 - 7,5 - 11 - 15**

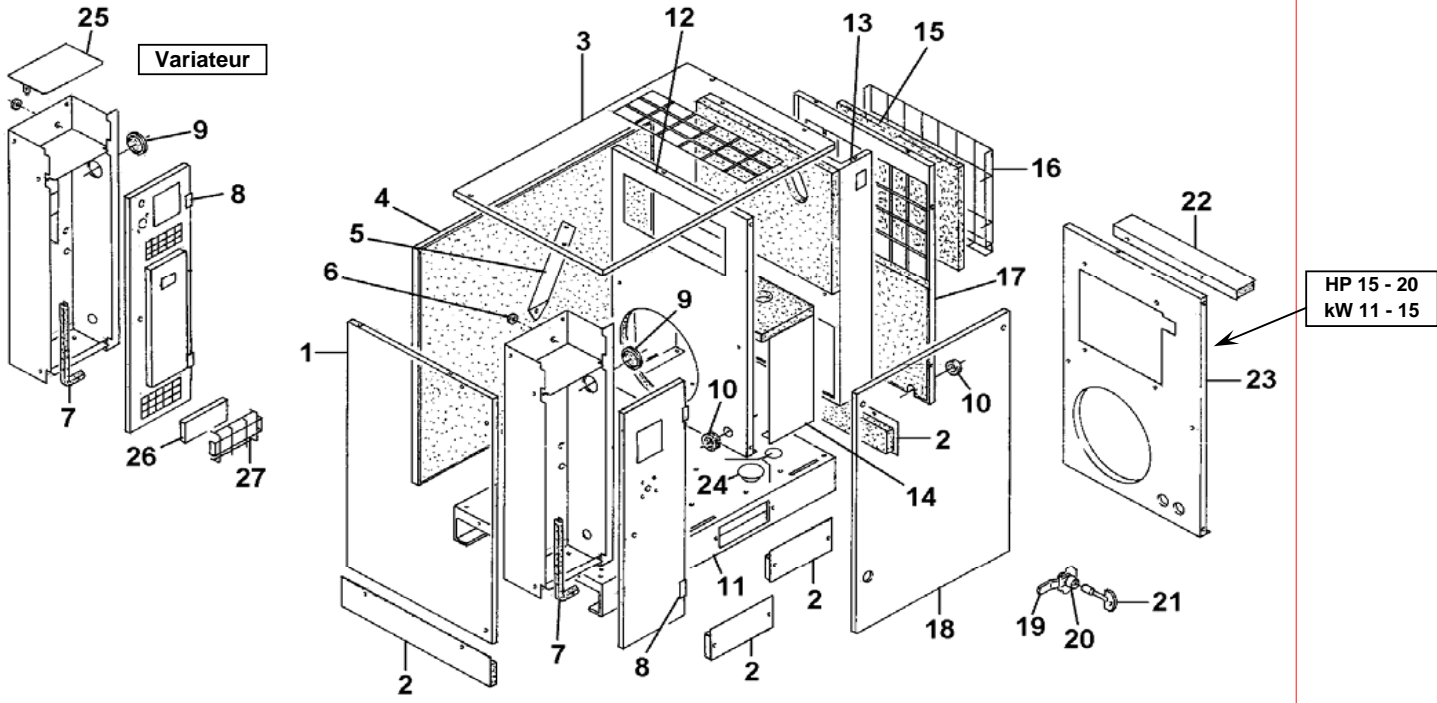
COMPRESSORI INDUSTRIALI - INDUSTRIAL COMPRESSORS - COMPRESSEURS INDUSTRIELS - INDUSTRIELLE KOMPRESSOREN - COMPRESOR INDUSTRIAL

Codice / Code / Code / Kode /Codigo	HP / kW	bar psi	V
4152007376	5,5 / 4	8	400/50Hz
4152007377	5,5 / 4	10	400/50Hz
4152007378	7,5 / 5,5	8	400/50Hz
4152007379	7,5 / 5,5	10	400/50Hz
4152007394	7,5 / 5,5	10	230/50Hz
4152007393	7,5 / 5,5	8	230/50Hz
4152007380	10 / 7,5	8	400/50Hz
4152007395	10 / 7,5	8	230/50Hz
4152007381	10 / 7,5	10	400/50Hz
4152007397	10 / 7,5	10	380/60Hz
4152007382	10 / 7,5	13	400/50Hz

Codice / Code / Code / Kode /Codigo	HP / kW	bar psi	V
4152007383	15 / 11	8	400/50Hz
4152007396	15 / 11	8	230/50Hz
4152007384	15 / 11	10	400/50Hz
4152007385	15 / 11	13	400/50Hz
<i>MAV "Variateur"</i>			
4152007389	15 / 11	8	400/50Hz
4152007390	15 / 11	10	400/50Hz
4152007386	20 / 15	8	400/50Hz
4152007387	20 / 15	10	400/50Hz
4152007388	20 / 15	13	400/50Hz
<i>MAV "Variateur"</i>			
4152007391	20 / 15	8	400/50Hz
4152007392	20 / 15	10	400/50Hz

N. TAV. DWG. NR. N° TABLE Nr. GRUPPENSATZ N. TAB.	<b>INDICE - INDEX - TABLE DES MATIERES - INHALTSVERZEICHNIS - INDICE</b>				
	<b>DESCRIZIONE</b>	<b>DESCRIPTION</b>	<b>DESIGANTION</b>	<b>BESCHREIBUNG</b>	<b>DESIGNACION</b>
<b>1</b>	CARENATURA - PANNELLI FONO ASSORBENTI	CASING - SOUND DAMPING PANELS	CARENAGE - PANNEAUX INSONORISANTS	STANDER FÜR DIE VERKLEIDUNG AKUSTISCHE PLATTEN	CARENADO - PANELES FONOABSORBENTES
<b>2</b>	FILTRO ASPIRAZIONE REGOLATORE DI PORTATA	FLOW REGULATOR INTAKE FILTER	FILTRE D'ASPIRATION REGULATEUR DE DEBIT	SAUGFILTER MENGENREGLER	FILTRO DE ASPIRACIÓN REGULADOR DE CAUDAL
<b>3</b>	SERBATOIO - SEPARATORE ARIA/OLIO	AIR/OIL TANK - SEPARATOR	RESERVOIR - SEPARATEUR AIR/HUILE	LUFT/ÖL - BEHÄLTER - ABSCHIEDER	DEPÓSITO DE ACEITE - SEPARADOR AIRE/ACEITE
<b>4</b>	RAFFREDDATORE ARIA/OLIO (HP 5,5-7,5-10 / Kw 4-5,5-7,5)	AIR/OIL COOLER (HP 5,5-7,5-10 / Kw 4-5,5-7,5)	REFROIDISSEUR AIR/HUILE (HP 5,5-7,5-10 / Kw 4-5,5-7,5)	LUFT/ÖL KÜHLER (HP 5,5-7,5-10 / Kw 4-5,5-7,5)	REFRIGERADOR AIRE/ACEITE (HP 5,5-7,5-10 / Kw 4-5,5-7,5)
<b>5</b>	RAFFREDDATORE ARIA/OLIO (HP 15-20 / Kw 11-15)	AIR/OIL COOLER (HP 15-20 / Kw 11-15)	REFROIDISSEUR AIR/HUILE (HP 15-20 / Kw 11-15)	LUFT/ÖL KÜHLER (HP 15-20 / Kw 11-15)	REFRIGERADOR AIRE/ACEITE (HP 15-20 / Kw 11-15)
<b>6</b>	STAFFA PORTA MOTORE ELETTRICO COMPRESSORE A VITE - TRASMISSIONE	SCREW COMPRESSOR AND ELECTRIC MOTOR METAL SUPPORT - TRANSMISSION	ETRIER SUPPORTE MOTEUR ELECTRIQUE COMPRESSEUR A VIS -TRANSMISSION	SCHRAUBENKOMPRESSOR- UND ELETROMOTORSTÜZE RIEMENTRIEB	ESTRIBO SOPORTE MOTOR ELÉCTRICO COMPRESOR DE TORNILLO - TRANSMISIÓN POR CORREA
<b>7</b>	PANNELLO COMANDI E QUADRO ELETTRICO	ELECTRIC BOARD CONTROL PANEL	PANNEAU DE COMMANDES TABLEAU ELECTRIQUE	ELEKTRISCHE SCHALTAFEL	PANEL DE MANDOS Y TABLERO ELÉCTRICO
<b>8</b>	TARGHETTE	LABELS	PLAQUE	SCHILD	PLACA
<b>9</b>	KIT DI MANUTENZIONE	SERVICE KITS	KITS DE MAINTENANCE	AUFBAUSATZ DES WARTUNG	KIT DE MANTENIMIENTO

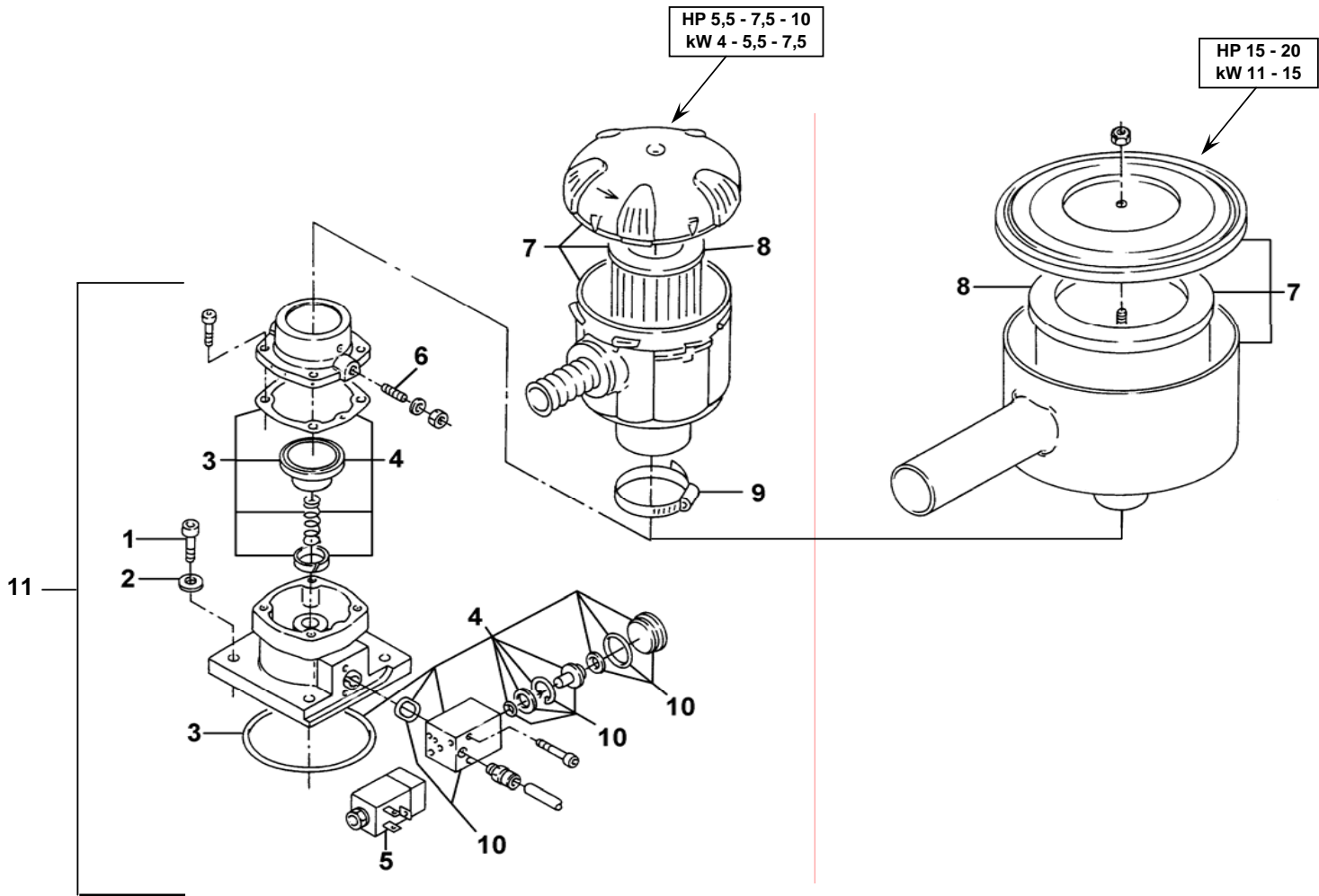




TAV. 1		Q.tà - Q.ty - Q.te - Anz. - Cant.																Carenatura - Pannelli fono assorbenti Casing - Sound-damping panels Carenage-panneaux insonorisants Stander für die Verkleidung akustische Platten Carenado - Paneles fonoabsorbentes						
		HP 5,5 / kW 4				HP 7,5 / kW 5,5				HP 10 / Kw 7,5								DESCRIZIONE	DESCRIPTION	DESIGNATION	BESCHREIBUNG	DESIGNACION		
Rif. N. Ref. No Nr. Ref. Bild Nr. Ref. N.	N. ordinaz. Part. num. Nr. Pièce Teil num. Codigo	4152007376	4152007377			4152007378	4152007379	4152007394	4152007393			4152007380	4152007395	4152007381	4152007397	4152007382								
1	2202904204	1	1			1	1	1	1			1	1	1	1	1				PANNELLO	PANEL	PANNEAU	PANEEL	PANEL
2	2202251298	1	1			1	1	1	1			1	1	1	1	1				KIT PANNELLI	PANELS KIT	KIT PANNEAUX	PANEELKIT	KIT PANELES
3	2202785904	1	1			1	1	1	1			1	1	1	1	1				COPERCHIO	COVER	COUVERCLE	DECKEL	TAPA
4	2202251234	1	1			1	1	1	1			1	1	1	1	1				PANNELLO	PANEL	PANNEAU	PANEEL	PANEL
5	2202251215	1	1			1	1	1	1			1	1	1	1	1				STAFFA	STIRRUP	ETRIER	BUGEL	ESTRIBO
6	0989422009	2	2			2	2	2	2			2	2	2	2	2				PASSACAVO	SEAL	BAGUE	RING	JUNTA
7	2200651125	X	X			X	X	X	X			X	X	X	X	X				GUARNIZIONE (A METRI)	PROFILE (IN METERS)	PROFIL (PAR METRES)	PROFIL (NACH METERN)	JUNTA (A METROS)
8	2202722200	2	2			2	2	2	2			2	2	2	2	2				CERNIERA	HINGE	CHARNIERE	SCHARNIER	BISAGRA
9	1088080308	1	1			1	1	1	1			1	1	1	1	1				PASSACAVO	SEAL	BAGUE	RING	JUNTA
10	2200630257	2	2			2	2	2	2			2	2	2	2	2				GUARNIZIONE	PROFILE	PROFIL	PROFIL	JUNTA
11	2202868401	1	1			1	1	1	1			1	1	1	1	1				BASE	CRANKCASE	CARTER	KURBELGEHÄUSE	CARTER
12	2202831700	1	1			1	1	1	1			1	1	1	1	1				PANNELLO	PANEL	PANNEAU	PANEEL	PANEL
13	2202251205	1	1			1	1	1	1			1	1	1	1	1				PANNELLO	PANEL	PANNEAU	PANEEL	PANEL
14	2202251204	1	1			1	1	1	1			1	1	1	1	1				DIVISORIO	DIVISOR	DIVISEUR	DIVISOR	DIVISOR
15	2202251210	1	1			1	1	1	1			1	1	1	1	1				ELEMENTO FILTRANTE	FILTER ELEMENT	ELEMENTDE FILTRE	FILTERELEMENT	ELEMEN. DE FILTRACION
16	2202251209	1	1			1	1	1	1			1	1	1	1	1				GRIGLIA	GRATING	GRILLE	GITTER	PARRILLA
17	2202785704	1	1			1	1	1	1			1	1	1	1	1				PANNELLO	PANEL	PANNEAU	PANEEL	PANEL
18	2202251231	1	1			1	1	1	1			1	1	1	1	1				PANNELLO	PANEL	PANNEAU	PANEEL	PANEL
19	2202251259	2	2			2	2	2	2			2	2	2	2	2				SCARPETTA	DRAW LATCH	LEVIER FERMETURE	ZIEHVERSCHLUSS	HEBILLA
20	2200540276	2	2			2	2	2	2			2	2	2	2	2				SERRATURA	DOOR LOCK	SERRURE DE PORTE	TURSCHLOSS	CERRADURA DE PUERTA
21	2200540264	1	1			1	1	1	1			1	1	1	1	1				CHIAVE	KEY	CLEF	SCHLÜSSEL	LLAVE
24	0686925295	1	1			1	1	1	1			1	1	1	1	1				TAPPO	PLUG	BOUCHON	STOPFEN	TAPON



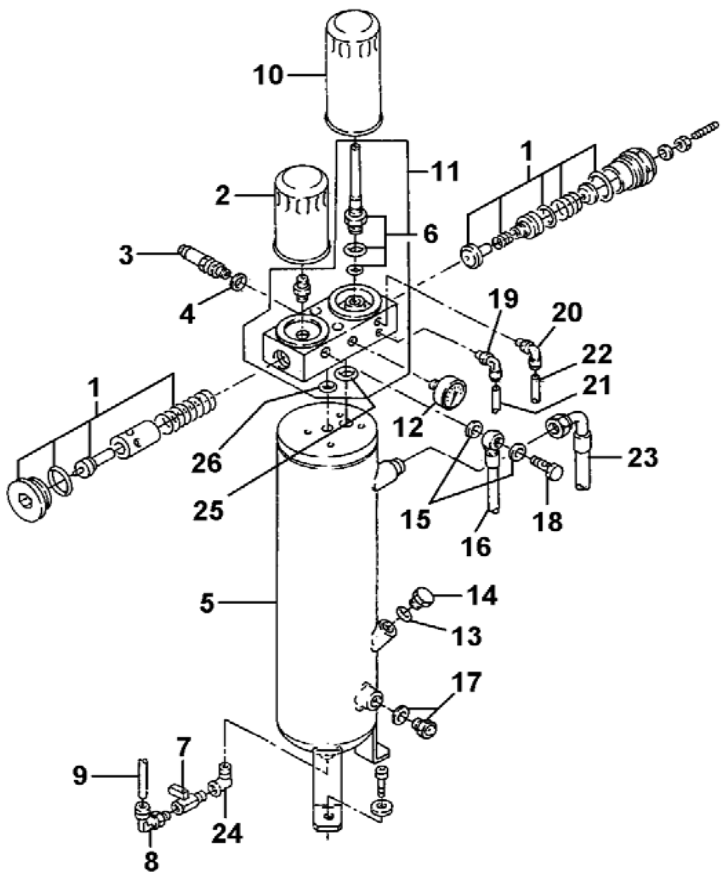




TAV. 2		Q.tà - Q.ty - Q.te - Anz. - Cant.																Filtro aspirazione regolatore di portata Flow regulator intake filter Filtre d'aspiration régulateur de débit Saugfilter Mengenregler Filtro de aspiración regulador de caudal						
		HP 5,5 / kW 4				HP 7,5 / kW 5,5				HP 10 / Kw 7,5								DESCRIZIONE	DESCRIPTION	DESIGNATION	BESCHREIBUNG	DESIGNACION		
Rif. N. Ref. No Nr. Ref. Bild Nr. Ref. N.	N. ordinaz. Part. num. Nr. Pièce Teil num. Codigo	4152007376	4152007377			4152007378	4152007379	4152007394	4152007393			4152007380	4152007395	4152007381	4152007397	4152007382								
1	0211132503	4	4			4	4	4	4			4	4	4	4	4				VITE	SCREW	VIS	SCHRAUBE	TORNILLO
2	0300801900	4	4			4	4	4	4			4	4	4	4	4				RONDELLA	WASHER	RONDELLE	UNTERLEGSSCHEIBE	ARANDELLA
3	2200900953	1	1			1	1	1	1			1	1	1	1	1				KIT GRUPPO ASPIRAZ.	SUCTION UNIT KIT	KIT GR. D'ASPIRATION	ANSAUGAGGREGAT KIT	KIT GRUP. ASPIRACION
4	2200900943	1	1			1	1	1	1			1	1	1	1	1				KIT GRUPPO ASPIRAZ.	SUCTION UNIT KIT	KIT GR. D'ASPIRATION	ANSAUGAGGREGAT KIT	KIT GRUP. ASPIRACION
5	2200599753	1	1			1	1	1	1			1	1	1	1	1				ELETTRORVALVOLA	SOLENOID VALVE	ELECTROVALVE	MAGNETVENTIL	VALVULA SOLENOIDE
6	0190155306	1	1			1	1	1	1			1	1	1	1	1				VITE	SCREW	VIS	SCHRAUBE	TORNILLO
7	6211473850	1	1			1	1	1	1			1	1	1	1	1				ASS. FILTRO ARIA	AIR FILTER ASS.	ENS. FILTRE AIR	LUFTFILTERAGGREGAT	CON. FILTRO DE AIRE
8	6211473950	1	1			1	1	1	1			1	1	1	1	1				FILTRO ARIA	AIR FILTER	FILTRE A AIR	LUFTFILTER	FILTRO DE AIRE
9	0347611300	1	1			1	1	1	1			1	1	1	1	1				FASCETTA	CLAMP	COLLIER	KLRMME	KLEMME
10	2200900954	1	1			1	1	1	1			1	1	1	1	1				KIT GRUPPO ASPIRAZ.	SUCTION UNIT KIT	KIT GR. D'ASPIRATION	ANSAUGAGGREGAT KIT	KIT GRUP. ASPIRACION
11	2202251255	1	1			1	1	1	1			1	1	1	1	1				ASS. GRUP. ASPIRAZ.	SUCTION UNIT ASS.	ENS. GRUP. D'ASPIRAT.	ANSAUGAGGREGAT	CON. GRUP. ASPIRACION



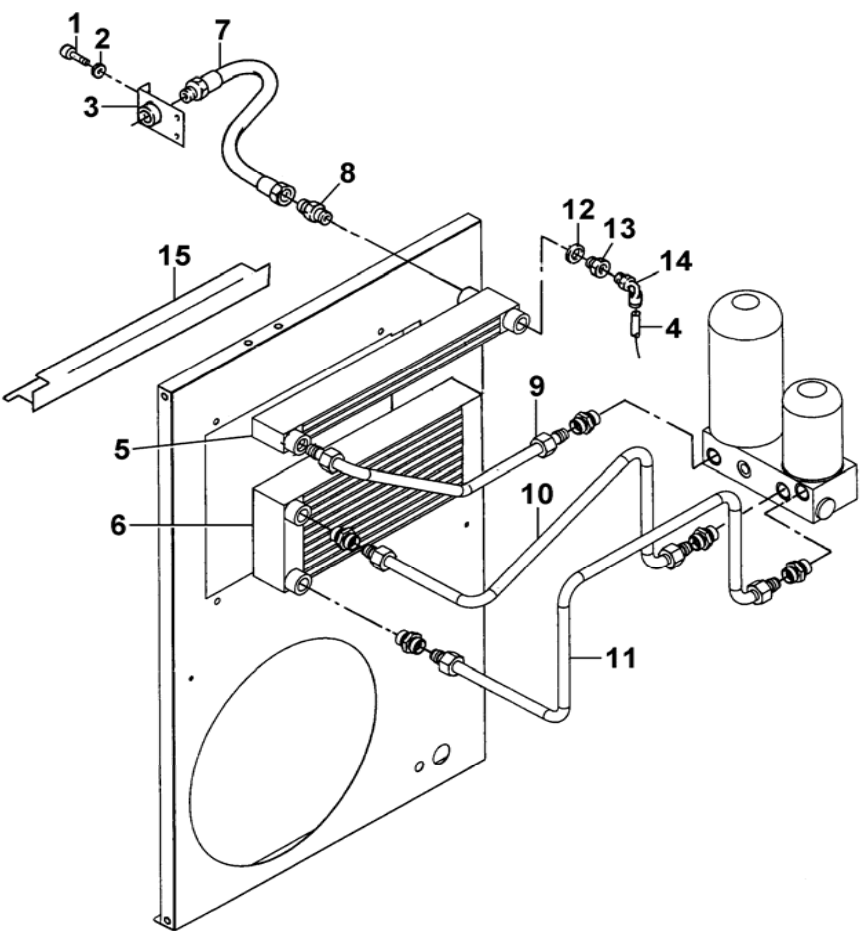




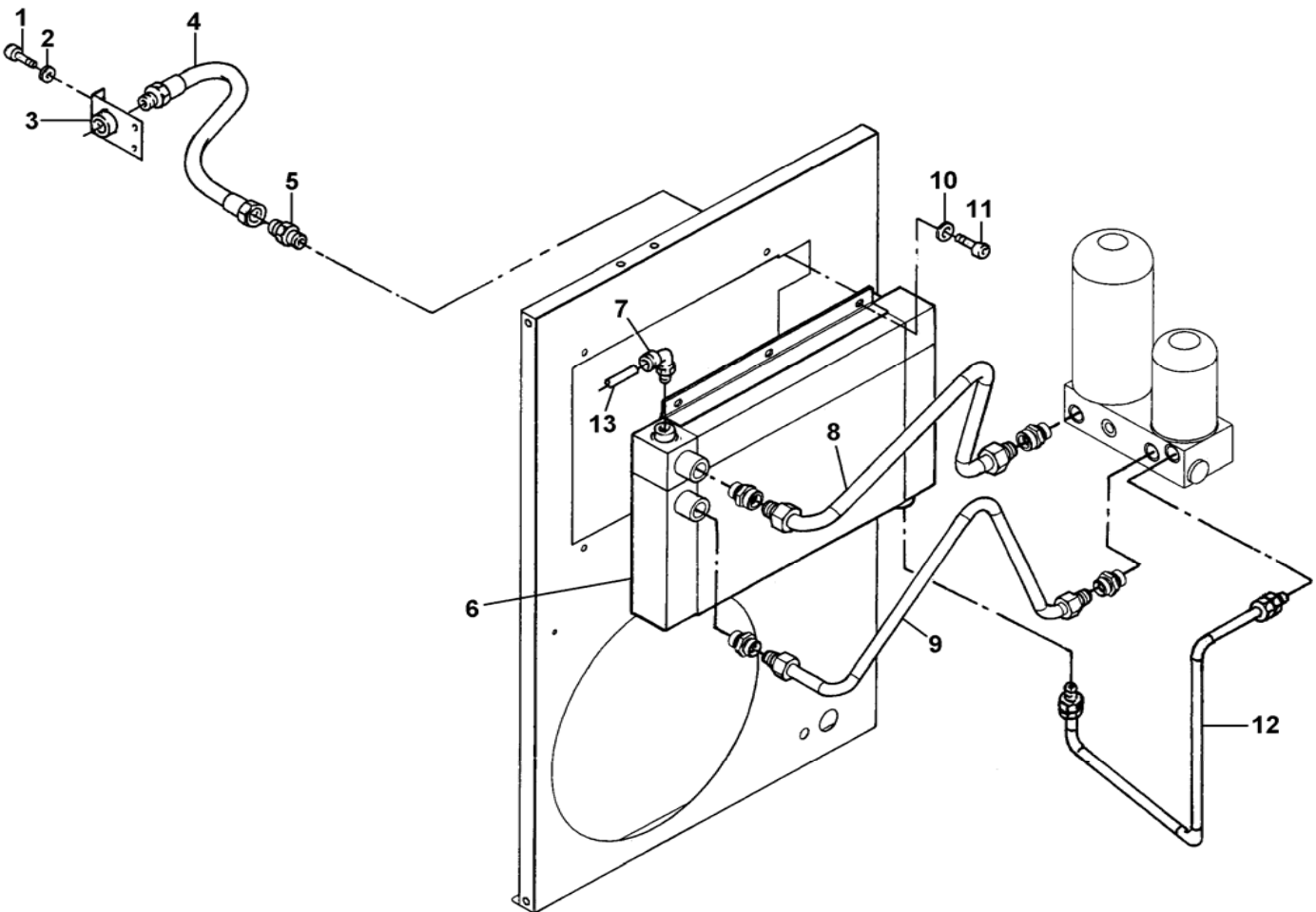
TAV. 3		Q.tà - Q.ty - Q.te - Anz. - Cant.																Serbatoio-Separatore aria/olio Air/oil tank-Separator Réservoir-Séparateur air/huile Luft/Öl-Behälter-Abscheider Depósito de aceite - Separador aire/aceite						
		HP 5,5 / kW 4				HP 7,5 / kW 5,5				HP 10 / Kw 7,5								DESCRIZIONE	DESCRIPTION	DESIGNATION	BESCHREIBUNG	DESIGNACION		
Rif. N. Ref. No Nr. Ref. Bild Nr. Ref. N.	N. ordinaz. Part. num. Nr. Pièce Teil num. Codigo	4152007376	4152007377			4152007378	4152007379	4152007394	4152007393			4152007380	4152007395	4152007381	4152007397	4152007382								
1	2901109500	1	1			1	1	1	1			1	1	1	1	1				KIT VALVOLA TERM./ VALVOLA MIN. PRESS.	THERMOSTATIC VALV.- MINI. PRESS. VAL. KIT	KIT VANNE THERM./ KIT VANNE PRES. MIN.	KIT TEMP. REGLER/ MINDESTDRUCKV.	KIT VALV. TERMOSTAT / VALV. PRESION MIN.
2	6211472650	1	1			1	1	1	1			1	1	1	1	1				FILTRO OLIO	OIL FILTER	FILTRE A HUILE	ÖLFILTER	FILTRO DE ACEITE
3	2202889101	1	1			1	1	1	1			1	1	1	1	1				VALVOLA DI SICUREZZA	SAFETY VALVE	SOUPAPE DE SURETE	SICHERHEITSENTIL	VALV. DE SEGURIDAD
4	0661100040	1	1			1	1	1	1			1	1	1	1	1				RONDELLA	WASHER	RONDELLE	UNTERLEGSCHIEBE	ARANDELLA
5	2202251216	1	1			1	1	1	1			1	1	1	1	1				SERBATOIO	OIL TANK	RESERVOIR D'HUILE	ÖLBEHÄLTER	DEPOSITO DE ACEITE
6	2200751735	1	1			1	1	1	1			1	1	1	1	1				KIT NIPPLO-OR	KIT NIPPLE-OR	KIT NIPPLE-OR	KIT NIPPEL-OR	KIT RACCORD-OR
7	0852001045	1	1			1	1	1	1			1	1	1	1	1				RUBINETTO	DRAIN COCK	ROBINET VIDANGE	ABLASSHAHN	GRIFO DE DRENAJE
8	0583812022	1	1			1	1	1	1			1	1	1	1	1				RACCORDO	ELBOW UNION	RACCORD COUDE	KRÜMMERAUSCHLUSS	UNION
9	0070600215	X	X			X	X	X	X			X	X	X	X	X				TUBO (A METRI)	PIPE (IN METERS)	TUYAU (PAR METRES)	ROHR (NACH METERN)	TUBO (A METROS)
10	6221372850	1	1			1	1	1	1			1	1	1	1	1				FILTRO DISOLEATORE	OIL FILTER SEPAR.	FILTRE SEPAR. D'HUILE	ÖLABSCHEIDERFILTER	SEPARADOR DE ACEITE
11	2202251243	1	1			1	1	1	1			1	1	1	1	1				ASS. GRUPPO VALVOLE	VALVES ASS.	SOUPAPE COMPLETE	VENTIL KOMPL.	CON. GRUP. VALVULAS
12	2200600103	1	1			1	1	1	1			1	1	1	1	1				MANOMETRO	PRESSURE GAUGE	MANOMETRE	MANOMETER	MANOMETRO
13	2200633453	1	1			1	1	1	1			1	1	1	1	1				ANELLO OR	O-RING	JOINT	RING	JUNTA TORICA
14	2202212421	1	1			1	1	1	1			1	1	1	1	1				TAPPO	PLUG	BOUCHON	STOPFEN	TAPON
15	0661100039	2	2			2	2	2	2			2	2	2	2	2				RONDELLA	WASHER	RONDELLE	UNTERLEGSCHIEBE	ARANDELLA
16	2202251214	1	1			1	1	1	1			1	1	1	1	1				TUBO FLESSIBILE	FLEXIBLE TUBE	TUYAU FLEXIBLE	SCHLAUCH	TUBO FLEXIBLE
17	2200759910	1	1			1	1	1	1			1	1	1	1	1				TAPPO LIVELLO	OIL GAUGE	JAUGE DE NIVEAU	ÖLSTANDNZEIGER	NIVEL DE ACEITE
18	0627510005	1	1			1	1	1	1			1	1	1	1	1				BULLONE FORATO	SCREW	VIS	SCHRAUBE	TORNILLO
19	2202763901	1	1																	RACCORDO	ELBOW UNION	RACCORD COUDE	KRÜMMERAUSCHLUSS	UNION
19	2202763902					1	1	1	1			1	1	1	1	1				RACCORDO	ELBOW UNION	RACCORD COUDE	KRÜMMERAUSCHLUSS	UNION
20	9740200432	1	1			1	1	1	1			1	1	1	1	1				RACCORDO	ELBOW UNION	RACCORD COUDE	KRÜMMERAUSCHLUSS	UNION
21	0070600209	X	X																	TUBO (A METRI)	PIPE (IN METERS)	TUYAU (PAR METRES)	ROHR (NACH METERN)	TUBO (A METROS)
21	0070600215					X	X	X	X			X	X	X	X	X				TUBO (A METRI)	PIPE (IN METERS)	TUYAU (PAR METRES)	ROHR (NACH METERN)	TUBO (A METROS)
22	0070600248	X	X			X	X	X	X			X	X	X	X	X				TUBO (A METRI)	PIPE (IN METERS)	TUYAU (PAR METRES)	ROHR (NACH METERN)	TUBO (A METROS)
23	2202251213	1	1			1	1	1	1			1	1	1	1	1				TUBO FLESSIBILE	FLEXIBLE TUBE	TUYAU FLEXIBLE	SCHLAUCH	TUBO FLEXIBLE
24	2200750221	1	1			1	1	1	1			1	1	1	1	1				RACCORDO	ELBOW UNION	RACCORD COUDE	KRÜMMERAUSCHLUSS	UNION
25	0663211244	1	1			1	1	1	1			1	1	1	1	1				ANELLO OR	O-RING	JOINT	RING	JUNTA TORICA
26	0663982200	1	1			1	1	1	1			1	1	1	1	1				ANELLO OR	O-RING	JOINT	RING	JUNTA TORICA



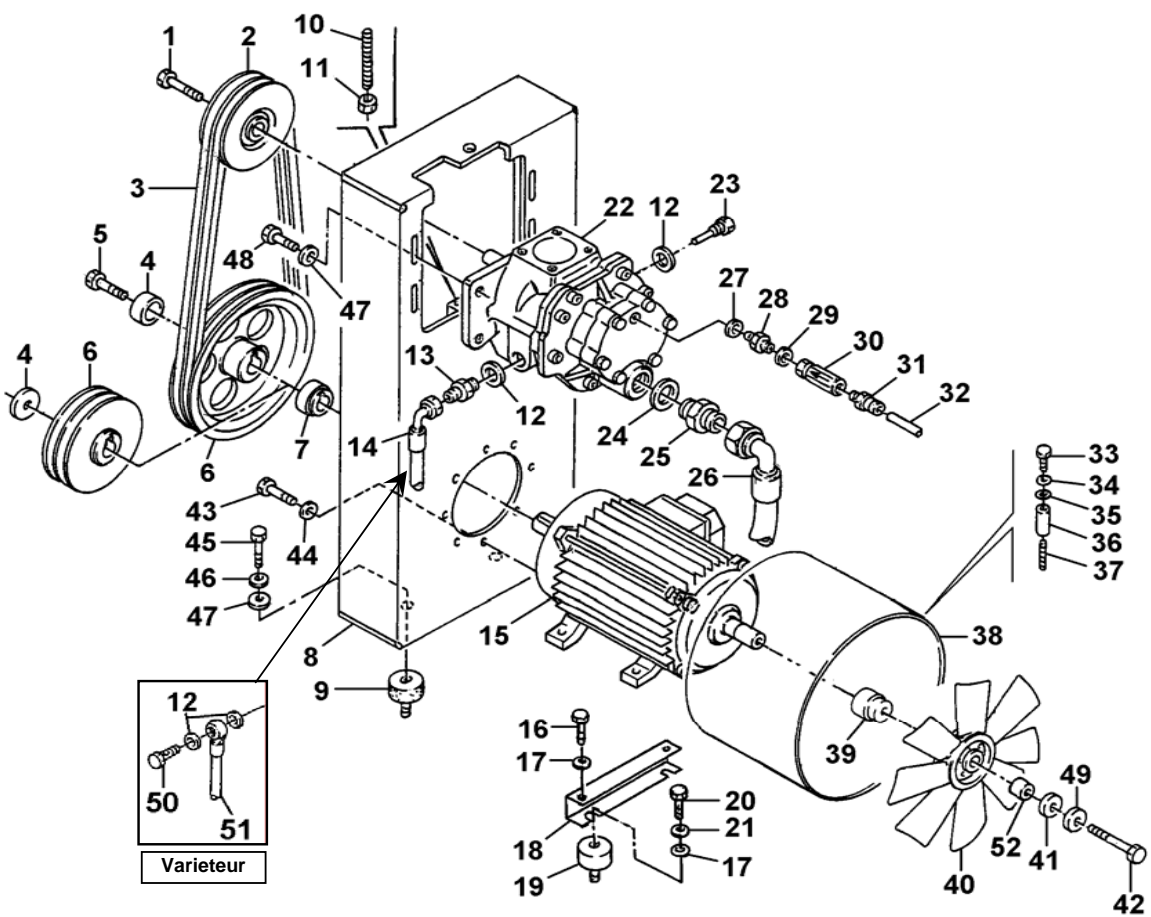












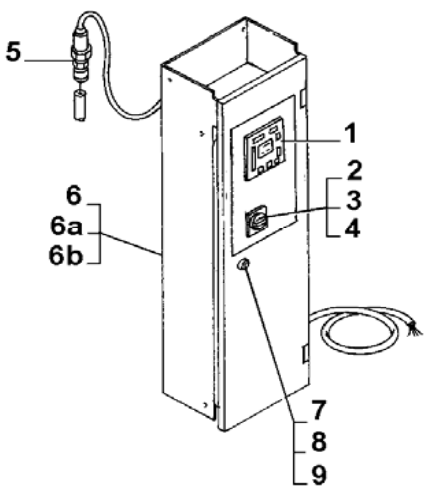
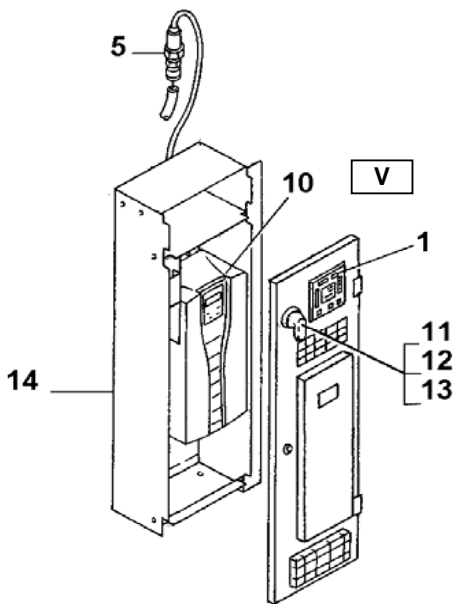




TAV. 6		Q.tà - Q.ty - Q.te - Anz. - Cant.														Staffa porta motore elettrico compressore a vite-Trasmissione / Screw compressor and electric motor metal support-Transmission / Étrier supporte moteur électrique compresseur a vis - Transmission / Schraubenkompressor-und Eletromotorstütze Riementrieb / Estribo soporte motor eléctrico compresor de tornillo - Transmisión por correa						
Rif. N. Ref. No Nr. Réf. Bild Nr. Ref. N.	N. ordinaz. Part. num. Nr. Pièce Teil num. Codigo	HP 15 / Kw 11							HP 20 / kW 15							DESCRIZIONE	DESCRIPTION	DESIGNATION	BESCHREIBUNG	DESIGNACION		
		4152007383	4152007384	4152007385	4152007396	4152007389	4152007390	4152007386	4152007387	4152007388	4152007391	4152007392	4152007386	4152007387	4152007388						4152007391	4152007392
1	2202250096	1	1	1	1	1												VITE (SX)	SCREW	VIS	SCHRAUBE	TORNILLO
2	2202704402	1			1	1												PULEGGIA VITE	PULLEY	POULIE	RIEMENSCHLEIBE	POLEA
2	2202250088		1															PULEGGIA VITE	PULLEY	POULIE	RIEMENSCHLEIBE	POLEA
2	2202704403			1														PULEGGIA VITE	PULLEY	POULIE	RIEMENSCHLEIBE	POLEA
2	2202251257										1	1	1	1	1			PULEGGIA VITE	PULLEY	POULIE	RIEMENSCHLEIBE	POLEA
3	2200660522	2																CINGHIA	DRIVING BELT	COURROIE	TREIBRIEMEN	CORREA TRASMISORA
3	2200660526		2	2			2									2		CINGHIA	DRIVING BELT	COURROIE	TREIBRIEMEN	CORREA TRASMISORA
3	2200660522				2	2												CINGHIA	DRIVING BELT	COURROIE	TREIBRIEMEN	CORREA TRASMISORA
3	2200660523										2					2		CINGHIA	DRIVING BELT	COURROIE	TREIBRIEMEN	CORREA TRASMISORA
3	2200660527										2					2		CINGHIA	DRIVING BELT	COURROIE	TREIBRIEMEN	CORREA TRASMISORA
4	2202251230	1	1	1	1	1	1				1	1	1	1	1			RONDELLA	WASHER	RONDELLE	UNTERLEGSCHLEIBE	ARANDELLA
5	0147140003	1	1	1	1	1	1				1	1	1	1	1			VITE	SCREW	VIS	SCHRAUBE	TORNILLO
6	2202207986	1			1	1					1							PULEGGIA MOTORE	PULLEY	POULIE	RIEMENSCHLEIBE	POLEA
6	2202206592		1													1		PULEGGIA MOTORE	PULLEY	POULIE	RIEMENSCHLEIBE	POLEA
6	2202207985			1														PULEGGIA MOTORE	PULLEY	POULIE	RIEMENSCHLEIBE	POLEA
6	2202180724										1					1		PULEGGIA MOTORE	PULLEY	POULIE	RIEMENSCHLEIBE	POLEA
7	2202251229	1	1	1	1	1	1				1	1	1	1	1			DISTANZIALE	SPACER	ENTRETOISE	DISTANZSTÜCK	ESPACIADOR
8	2202846480	1	1	1	1	1	1				1	1	1	1	1			SUPP. COMPRESSORE	COMPR. SUPPORT	SUPPORT COMPRESS.	KOMPRESSORTÜTZE	SOP. COMPRESOR
9	0392110022	2	2	2	2	2	2				2	2	2	2	2			PUFFER	PUFFER	PUFFER	PUFFER	PUFFER
10	2200710633	1	1	1	1	1	1				1	1	1	1	1			GRANO	SCREW	VIS	SCHRAUBE	TORNILLO
11	0266211200	1	1	1	1	1	1				1	1	1	1	1			DADO	NUT	ECROU	MUTTER	TUERCA
12	0661100039	2	2	2	2	3	3				2	2	2	3	3			RONDELLA	WASHER	RONDELLE	UNTERLEGSCHLEIBE	ARANDELLA
13	0571003576	1	1	1	1	1	1				1	1	1	1	1			NIPPLIO	NIPPLE	NIPPLE	NIPPEL	RACOR
14	2202251214	1	1	1	1	1					1	1	1					TUBO FLESSIBILE	FLEXIBLE TUBE	TUYAU FLEXIBLE	SCHLAUCH	TUBO FLEXIBLE
15	2202870400	1	1	1		1	1											MOTORE ELETTRICO	MOTOR	MOTEUR	MOTOR	MOTOR
15	2202870500				1													MOTORE ELETTRICO	MOTOR	MOTEUR	MOTOR	MOTOR
15	2202892600										1	1	1	1	1			MOTORE ELETTRICO	MOTOR	MOTEUR	MOTOR	MOTOR
16	0147196264	2	2	2	2	2	2				2	2	2	2	2			VITE	SCREW	VIS	SCHRAUBE	TORNILLO
17	0300027417	4	4	4	4	4	4				4	4	4	4	4			RONDELLA	WASHER	RONDELLE	UNTERLEGSCHLEIBE	ARANDELLA
18	2202869500	1	1	1	1	1	1				1	1	1	1	1			STAFFA	STIRRUP	ETRIER	BÜGEL	ESTRIBO
19	0392110023	2	2	2	2	2	2				2	2	2	2	2			PUFFER	PUFFER	PUFFER	PUFFER	PUFFER
20	0147135903	2	2	2	2	2	2				2	2	2	2	2			VITE	SCREW	VIS	SCHRAUBE	TORNILLO
21	2200722506	2	2	2	2	2	2				2	2	2	2	2			RONDELLA	WASHER	RONDELLE	UNTERLEGSCHLEIBE	ARANDELLA
22	2989016400	1	1	1	1	1	1				1	1	1	1	1			COMPRESSORE	COMPRESSOR	COMPRESSEUR	KOMPRESSOR	COMPRESOR
23	2202260308	1	1	1	1	1	1				1	1	1	1	1			RACCORDO	UNION	RACCORD	VERSCHRAUBUNG	UNION
24	0661100044	1	1	1	1	1	1				1	1	1	1	1			RONDELLA	WASHER	RONDELLE	UNTERLEGSCHLEIBE	ARANDELLA
25	0571003577	1	1	1	1	1	1				1	1	1	1	1			NIPPLIO	NIPPLE	NIPPLE	NIPPEL	RACOR
26	2202251213	1	1	1	1	1	1				1	1	1	1	1			TUBO FLESSIBILE	FLEXIBLE TUBE	TUYAU FLEXIBLE	SCHLAUCH	TUBO FLEXIBLE
27	0661100042	1	1	1	1	1	1				1	1	1	1	1			RONDELLA	WASHER	RONDELLE	UNTERLEGSCHLEIBE	ARANDELLA
28	2200751434	1	1	1	1	1	1				1	1	1	1	1			NIPPLIO	NIPPLE	NIPPLE	NIPPEL	RACOR
29	0661100038	1	1	1	1	1	1				1	1	1	1	1			RONDELLA	WASHER	RONDELLE	UNTERLEGSCHLEIBE	ARANDELLA
30	0823005009	1	1	1	1	1	1				1	1	1	1	1			VALVOLA	NO-RETURN VALVE	CLAPET ANTI-RETURN	RÜCKSCHLAGVENTIL	VALV. RETENCION
31	0583818118	1	1	1	1	1	1				1	1	1	1	1			RACCORDO	UNION	RACCORD	VERSCHRAUBUNG	UNION
32	0070600248	X	X	X	X	X	X				X	X	X	X	X			TUBO (A METRI)	PIPE (IN METERS)	TUYAU (PAR METRES)	ROHR (NACH METERN)	TUBO (A METROS)
33	0147120503	4	4	4	4	4	4				4	4	4	4	4			VITE	SCREW	VIS	SCHRAUBE	TORNILLO
34	0333421600	4	4	4	4	4	4				4	4	4	4	4			RONDELLA	WASHER	RONDELLE	UNTERLEGSCHLEIBE	ARANDELLA
35	0301231800	4	4	4	4	4	4				4	4	4	4	4			RONDELLA	WASHER	RONDELLE	UNTERLEGSCHLEIBE	ARANDELLA
36	2202251228	4	4	4	4	4	4				4	4	4	4	4			DISTANZIALE	SPACER	ENTRETOISE	DISTANZSTÜCK	ESPACIADOR
37	2200710638	4	4	4	4	4	4				4	4	4	4	4			GRANO	SCREW	VIS	SCHRAUBE	TORNILLO



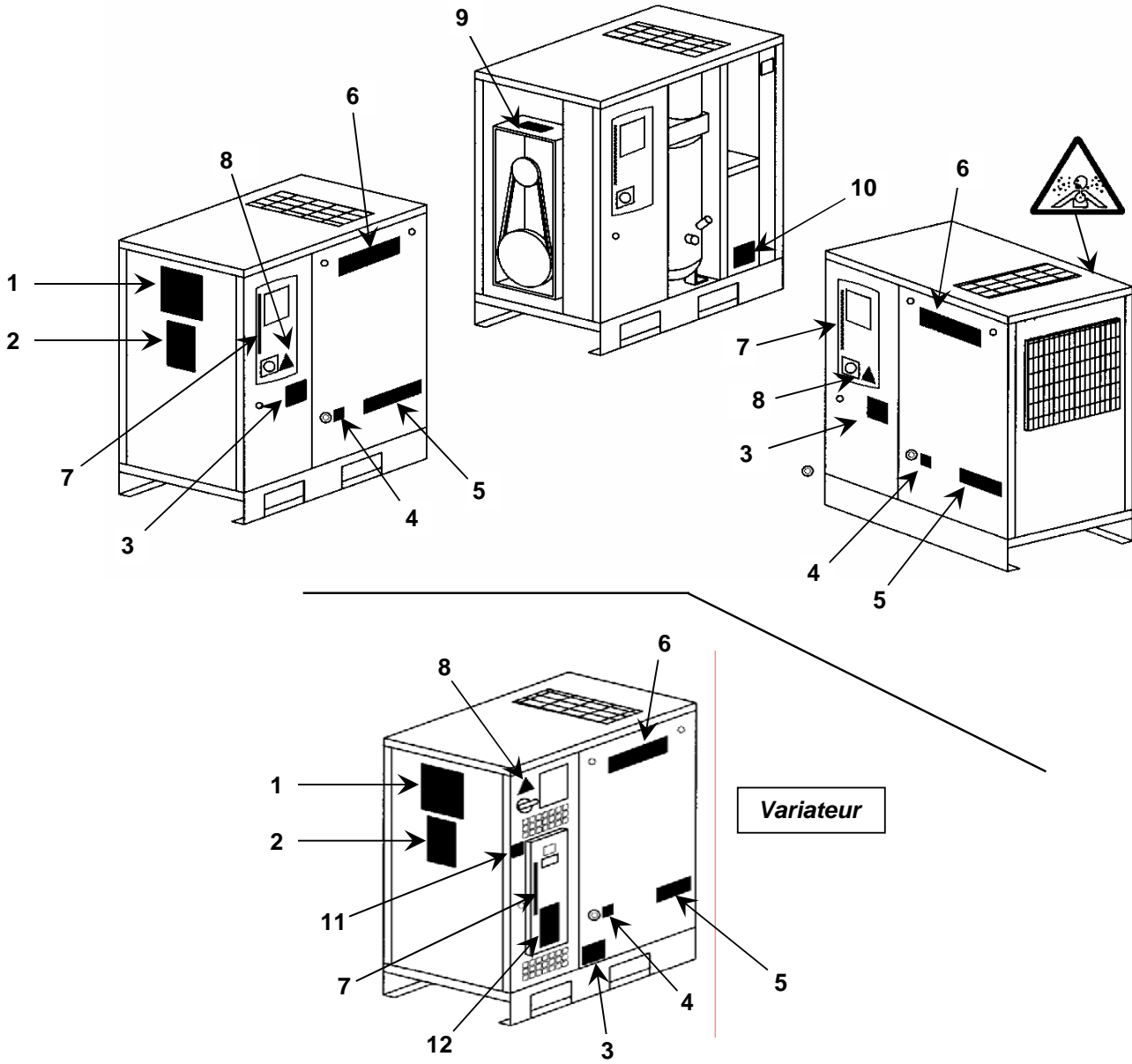


















## TAV.9

## KIT DI MANUTENZIONE / SERVICE KIT / KIT DE MAINTENANCE / WARTUNGSAUFBAUSATZ / KIT DE MANTENIMIENTO

Kit									
Filtri aria, olio / Air-Oil filters / Filtres air, huile / Luftfilter, Ölfilter / Filtros aire, aceite									
Codice / Code / Code / Kode / Codigo	HP 5,5-7,5-10 kW 4-5,5-7,5	HP 15 - 20 kW 11 - 15	Tav. Dwg. Tab. Nr. Tab.	Rif. Ref. Nr. Bild Ref.	Descrizione	Description	Designation	Beschreibung	Designacion
2200902390	●		2	8	FILTRO ARIA	AIR FILTER	FILTRE A AIR	LUFTFILTER	FILTRO DE AIRE
			3	2	FILTRO OLIO	OIL FILTER	FILTRE A HUILE	ÖLFILTER	FILTRO DE ACEITE
2200902208		●	2	8	FILTRO ARIA	AIR FILTER	FILTRE A AIR	LUFTFILTER	FILTRO DE AIRE
			3	2	FILTRO OLIO	OIL FILTER	FILTRE A HUILE	ÖLFILTER	FILTRO DE ACEITE

Kit									
Filtri aria, olio, disoleatore / Air-oil filters, oil separator / Filtres air, huile, déshuileur / Luftfilter, Ölfilter, Ölabscheiderfilter / Filtros de aire, de aceite, separador de aceite									
Codice / Code / Code / Kode / Codigo	HP 5,5-7,5-10 kW 4-5,5-7,5	HP 15 - 20 kW 11 - 15	Tav. Dwg. Tab. Nr. Tab.	Rif. Ref. Nr. Bild Ref.	Descrizione	Description	Designation	Beschreibung	Designacion
2200902387	●		2	8	FILTRO ARIA	AIR FILTER	FILTRE A AIR	LUFTFILTER	FILTRO DE AIRE
			3	2	FILTRO OLIO	OIL FILTER	FILTRE A HUILE	ÖLFILTER	FILTRO DE ACEITE
			3	10	FILTRO DISOLEATORE	OIL FILTER SEPAR.	FILTRE DESHUILEUR	ÖLABSCHEIDERFILTER	SEPAR. DE ACEITE
			1	15	ELEMENTO FILTRANT.	FILTER ELEMENT	ELEMENT DE FILTR.	FILTERELEMMENT	ELEM. DE FILTRACION
2200902210		●	2	3	KIT GRUPPO ASPIRAZ.	SUCTION UNIT KIT	KIT GR. D'ASPIRATION	ANSAUGAGGREGAT KIT	KIT GRUP. ASPIRACION
			2	8	FILTRO ARIA	AIR FILTER	FILTRE A AIR	LUFTFILTER	FILTRO DE AIRE
			3	2	FILTRO OLIO	OIL FILTER	FILTRE A HUILE	ÖLFILTER	FILTRO DE ACEITE
			3	10	FILTRO DISOLEATORE	OIL FILTER SEPAR.	FILTRE DESHUILEUR	ÖLABSCHEIDERFILTER	SEPAR. DE ACEITE
2200902210		●	1	15	ELEMENTO FILTRANT.	FILTER ELEMENT	ELEMENT DE FILTR.	FILTERELEMMENT	ELEM. DE FILTRACION
			2	3	KIT GRUPPO ASPIRAZ.	SUCTION UNIT KIT	KIT GR. D'ASPIRATION	ANSAUGAGGREGAT KIT	KIT GRUP. ASPIRACION

Kit 8000									
Ore / Hours / Heures / Betriebsstunden / Horas de servicio									
Codice / Code / Code / Kode / Codigo	HP 5,5-7,5-10 kW 4-5,5-7,5	HP 15 - 20 kW 11 - 15	Tav. Dwg. Tab. Nr. Tab.	Rif. Ref. Nr. Bild Ref.	Descrizione	Description	Designation	Beschreibung	Designacion
2200902388	●		2	8	FILTRO ARIA	AIR FILTER	FILTRE A AIR	LUFTFILTER	FILTRO DE AIRE
			3	2	FILTRO OLIO	OIL FILTER	FILTRE A HUILE	ÖLFILTER	FILTRO DE ACEITE
			3	10	FILTRO DISOLEATORE	OIL FILTER SEPAR.	FILTRE DESHUILEUR	ÖLABSCHEIDERFILTER	SEPAR. DE ACEITE
			1	15	ELEMENTO FILTRANT.	FILTER ELEMENT	ELEMENT DE FILTR.	FILTERELEMMENT	ELEM. DE FILTRACION
			3	1	KIT VALVOLA TERM./ VALVOLA MIN. PRESS.	THERMOSTATIC VALV. MINI. PRESS. VAL. KIT	KIT VANNE THERM./ KIT VANNE PRES. MIN.	KIT TEMP. REGLER/ MINDESTDRUCKV.	KIT VALV. THERMOST./ VALV. PRESION MIN.
			2	4	KIT GRUPPO ASPIRAZ.	SUCTION UNIT KIT	KIT GR. D'ASPIRATION	ANSAUGAGGREGAT KIT	KIT GRUP. ASPIRACION
2200902212		●	2	8	FILTRO ARIA	AIR FILTER	FILTRE A AIR	LUFTFILTER	FILTRO DE AIRE
			3	2	FILTRO OLIO	OIL FILTER	FILTRE A HUILE	ÖLFILTER	FILTRO DE ACEITE
			2	10	FILTRO DISOLEATORE	OIL FILTER SEPAR.	FILTRE DESHUILEUR	ÖLABSCHEIDERFILTER	SEPAR. DE ACEITE
			1	15	ELEMENTO FILTRANT.	FILTER ELEMENT	ELEMENT DE FILTR.	FILTERELEMMENT	ELEM. DE FILTRACION
			3	1	KIT VALVOLA TERM./ VALVOLA MIN. PRESS.	THERMOSTATIC VALV. MINI. PRESS. VAL. KIT	KIT VANNE THERM./ KIT VANNE PRES. MIN.	KIT TEMP. REGLER/ MINDESTDRUCKV.	KIT VALV. THERMOST./ VALV. PRESION MIN.
			2	4	KIT GRUPPO ASPIRAZ.	SUCTION UNIT KIT	KIT GR. D'ASPIRATION	ANSAUGAGGREGAT KIT	KIT GRUP. ASPIRACION

Kit rimontaggio compressore / Compressor mounting kit / Kit remontage compresseur / Kompressoraufbausatz / Kit montaje del compresor									
Codice / Code / Code / Kode / Codigo	HP 5,5-7,5-10 kW 4-5,5-7,5	HP 15 - 20 kW 11 - 15	Tav. Dwg. Tab. Nr. Tab.	Rif. Ref. Nr. Bild Ref.	Descrizione	Description	Designation	Beschreibung	Designacion
2200902389	●	●	2	3	ANELLO OR	O-RING	JOINT	RING	JUNTA TORICA
					SCHEDA DI ISTRUZ.	INSTRUCTION SHEET	FEUILLE D'INSTRUCTION	ANWEISUNGSLAKEN	HOJA DE INSTRUC.

**Tabella cingie / Tab. driving belt / Tab. courroie / Abb. Treibriemen / Tab. correa trasmisora**

HP / kW	bar / psi	50 Hz		60 Hz		50 Hz (IVR)		NOTE
		Codice / Code / Code / Kode /Codigo	Q.ta Q.ty Q.te Anz. Cant.	Codice / Code / Code / Kode /Codigo	Q.ta Q.ty Q.te Anz. Cant.	Codice / Code / Code / Kode /Codigo	Q.ta Q.ty Q.te Anz. Cant.	
5,5	8	2200660525	2					
	10	2200660524	2					
7,5	8	2200660525	2					
	10	2200660524	2					
10	8	2200660523	2					
	10	2200660526	2	2200660523	2			
	13	2200660525	2					
15	8	2200660522	2			2200660522	2	
	10	2200660526	2			2200660526	2	
	13	2200660526	2					
20	8	2200660527	2			2200660527	2	
	10	2200660523	2			2200660523	2	
	13	2200660526	2					



